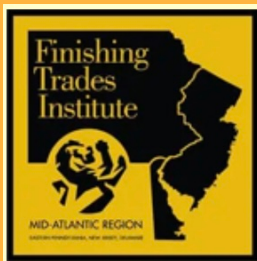


LAUREL HILL MANSION NEWS

LHM HOUSE NEWS



THIS SUMMER THE FRONT OF THE MANSION WAS PAINTED BY AWC PAINTING AND THE METAL FENCE BY THE FINISHING TRADES INSTITUTE OF THE MID-ATLANTIC REGION THROUGH THEIR BUILDING TRADES APPRENTICESHIP PROGRAM. SPECIAL THANKS TO THEIR COMMERCIAL PAINT COORDINATOR FOR PAINTING THE WHITE PICKET FENCE PRO BONA. WWW.FIT.EDU



THANK YOU HOUSE CHAIR JACQUI MARTIN FOR ARRANGING THE LOVELY HOUSE AND FENCE REFRESH



PRESIDENT'S MESSAGE

As the summer season at Laurel Hill Mansion comes to a close, I can report that we have once again brought music back inside. The three Sunday afternoon concerts were enjoyed by all who attended thanks to all the volunteers that helped make them so welcoming for our audience. On August 20, Allen Krantz, gave a beautiful tribute concert for Alice Nugent with her daughters and grandchildren in attendance.

The world is a very different place than it was three years ago with more challenges. Safety has become a more pressing issue for our visitors, and it has become necessary for us to hire security to ensure everyone's safety.

Moving forward toward the holiday season, we are pleased to welcome the ladies from the Militia Hill Questers who will make the mansion look festive for our holiday visitors. More information will be forthcoming for member opportunities to help.

I am also happy to report that I am in conversation with the Rawle and Henderson law firm and hoping that they will become more involved in promoting and actively participating in our organization.

I would like to welcome all of our new members and hope that we will be seeing you at meetings and events. We continue to try to recruit new members to strengthen our organization in the future.

Barbara Frankl, President, WFGP

LAWN & GARDEN



Pansies

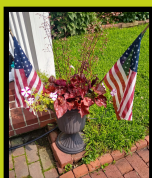


Yellow Coreopsis

The Garden Committee has been beautifying the grounds of LHM this past year. Stop by to enjoy the gardens and the lovely view from the back porch. If you enjoy gardening or just being outside, please join the Committee, no experience necessary! Contact: drcfmifsud@gmail.com



Butterfly Bush



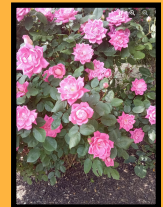
CHALLENGING SUMMER IN THE LHM GARDENS



Do you remember the spring drought of April, May and early June of this year? The ground and plants were hungry for some moisture. It was hard to dig into the soil to plant flowers. When you finally succeeded in planting, the watering was a real chore as the plants needed water on a daily basis. Then we came into mid-June when the rain came and came. Now we had too much water. It was like a losing battle. So we adapted to the

needed rain but saw our flowers and plants having a rough time drying out. We saw the problems that too much rain can bring to our gardens— rust, mildew, and aphids.

The weeds looked upon this sudden water downpour as a way to just go crazy growing. One could not keep up with the invasion of the weeds. One got their exercise bending over and pulling as if it was an aerobic exercise. Even our garden walkways were a challenge as we sprayed to keep the weed count to a minimum. But it was the year of weeds. The weather dilemma



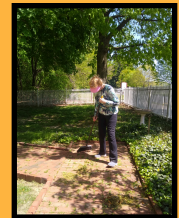
continued all through July with the high heat, humidity and rainfall. August started with the same pattern until the last few weeks as the cool nights arrived. The plants were loving this weather change. It was amazing to see the flowers start to bloom again.



Now we are in the beginning of the fall season and Mother Nature is at it again. Heat wave time. I am just glad that I am NOT a plant trying to grow and show off my beautiful flowers. It has been a challenging summer for

any gardener who loves growing flowers and plants.

Photos –These were taken in late June when Christine Mifsud and I tackled cutting back the larger bushes on the property. Christine came with a ladder, cutters and large brown bags to do the job. In one photo if you look closely, you will find Christine behind some bushes. Look for the hat.



I do need to change a statement about Christine. She told me that she is not a master gardener. But as someone who has been working with her, she knows her garden plants, procedures and how to work with a variety of plants. She is amazing!

Nancy Werner, WFGP Treasurer and Co-chair of the Garden Committee

“THE POLLINATORS”

**OUTDOOR LECTURE PRESENTED BY
LHM BEEKEEPER DON SHUMP**



**SATURDAY, 11:00 AM
OCTOBER 21, 2023
LAUREL HILL MANSION
3487 EDGLEY DRIVE
PHILA, PA 19121**

Join us as Don passionately explains how honey bee colonies work, the job of a Beekeeper, and why bees are such an integral part of our environment. Everyone will walk away with a new-found understanding and respect for bees and their beneficial contribution to the world around us.



www.philadelphiabees.com

**RESERVE A SPOT : WFGP Members: Free
Admission; Non Members: only \$5
215-235-1776 [https://
www.laurelhillmansion.org/Pages/events.html](https://www.laurelhillmansion.org/Pages/events.html)**



**ENJOY CREATIVE EN PLEIN AIR
(open air) PAINTING AT
LAUREL HILL MANSION**

OCTOBER 7 OR OCTOBER 14, 2023

**REGISTER: [https://
www.laurelhillmansion.org/Pages/
plein_air.html](https://www.laurelhillmansion.org/Pages/plein_air.html)**

ALL DECKED OUT FOR THE HOLIDAYS



In the tradition of LHM’s annual holiday festivities, WFGP will provide Christmas Tours, Tea, and Gingerbread to guests this December. Special thanks to our decorators,

The MILITIA HILL QUESTERS.

LAUREL HILL MANSION

3487 EDGLEY DRIVE

PHILADELPHIA, PA. 19121

215-235-1776

VISIT@LAURELHILLMANSION.ORG

UPCOMING LHM EVENTS

WFGP General Members Meeting: 11/04/23

Bee Keeper Pollinator Presentation: 10/21/23

Plein Air Painting: 10/07/23, 10/14/23

LHM Holiday Tours: Beginning 12/01/23

**[https://www.laurelhillmansion.org/
Pages/events.html](https://www.laurelhillmansion.org/Pages/events.html)**

WOMEN FOR GREATER PHILADELPHIA AMERICA 250 COMMITTEE

We would like to invite YOU to join us at our next virtual WFGP America 250 committee meeting. The Women for Greater Philadelphia are the stewards of the historic Philadelphia park house, Laurel Hill Mansion, the creators of cultural events, educational programs and the preservers of history. The committee's objective is to celebrate America's 250th Anniversary in 2026 through activities that educate and engage the public about Laurel Hill Mansion and Colonial history.

We would like to set our goals together with you. Did you know that on September 11, 1976 fifteen hundred people gathered at Independence Mall for the launching of a Time Capsule* by Women for the Bicentennial (now Women for Greater Philadelphia)? This Time Capsule was placed in the vault of the Pennsylvania Historical Society (HSP) and will be opened in September 2026.

This is just one event we are planning. So, please share your thoughts, your expertise may prove to be valuable, and you may be interested in becoming a Committee Member for WFGP America 250. Please reply by emailing s.kittner@womenforgreaterphiladelphia.org or call us at 215-235-1776. We will send you a link when the date of our next WFGP America 250 Committee meeting is scheduled. We look forward to welcoming you virtually.

*The 1976 Time Capsule is wrapped in brown paper and sealed with wax, taking the form of a bound book. It measures 15" x 13" x 1.5" and is stored, along with a plaque in an archival box that is housed at the Historical Society of Pennsylvania.

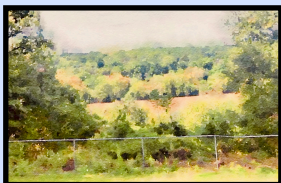


REFLECTIONS... On an early morning this past June, I had my garage door open as I loaded a multitude of gardening tools into the trunk of my car. My throat felt rough and my eyes were stinging due to smoke particulates migrating into Bucks County from Canadian wildfires. Once the car was loaded, I headed south on York Rd. through Warminster, Hatboro, Abington, Cheltenham... all the while the skies remained dark. At times an orange haze also blocked the sunlight. I kept my car windows up, ran the A.C. and questioned my (poor) judgement to keep my commitment to garden at Laurel Hill Mansion. I really didn't want to sport a mask while working.

As is my habit, I walked the grounds around the Mansion when I arrived. The sky was clear. I felt a sense of urgency to get working. Certainly gray skies would arrive soon. Four hours later, after weeding, cutting, pruning and watering I walked to the rear garden area again. The porch was very inviting but I chose to stand by the fence for a closer view of the Schuylkill River. The code red fumes hadn't arrived over the river. There was a clear view and a delightful cooling breeze.



I felt tremendous gratitude to all the Thinkers, Planners and Workers who realized the tremendous importance of maintaining a beautiful raw environment, keeping non-essential development at bay. It isn't just the knowledge or love of Philadelphia's history that makes historic preservation vital to our lives. It's having the wisdom to maintain space where people can breathe in every sense of the word. We need park areas to feed our physical, intellectual, psychological and spiritual selves.



Come, sit on the porch at Laurel Hill Mansion. Unwind and experience what the Women for Greater Philadelphia have saved for you.

Christine Mifsud, Garden Committee

History Quiz

Who was the only man to sign all four great state papers of the United States? (The Declaration of Independence, Articles of Confederation, Continental Association, and the Constitution)

- A. Ben Franklin
- B. Robert Morris
- C. Thomas Jefferson
- D. Roger Sherman
- E. John Adams

Answer on page 6

Women for Greater Philadelphia Spotlights **CHRISTINE MIFSUD**



We are pleased to Spotlight Christine Mifsud, long time member of WFGP and Board Member since 2021. Christine is an invaluable member and Co-chair of the LHM Garden Committee where she has tirelessly worked to beautify the grounds and the overall aura of the mansion with her innovative ideas. Christine’s education and experience enhance her skills related to Laurel Hill Mansion, in addition to her gardening expertise, she is knowledgeable in colonial history, decorative arts, and furniture styles.

Christine was awarded a Bachelor of Fine Arts (B.F.A.) degree from the Moore College of Art and achieved Who’s Who Among Students in American Universities and Colleges National recognition. Additionally, Christine completed Advanced Theoretical and Critical Studies in the Fine Arts through the prestigious Violette de Mazia Foundation. Christine’s diverse background reflects her competency in real estate and law. She has been awarded a Commonwealth of Pennsylvania Real Estate Salesperson license and has taken paralegal courses with practical experience in these areas.

The Pennsylvania Horticultural Society Gardens and Greening Contest has relied on Christine as a Contest Judge for many years, where she shares her gardening expertise and theory with contest entrants.

Formerly, Christine was employed as a docent at Woodford Mansion, a historic house museum in East Fairmount Park, working independently handling and caring for antique objects, together with designing and implementing programs in a museum setting. She left Woodford after moving to Warwick and started giving tours at Fonthill Castle in Doylestown and is currently the Chair of the Education Committee at Heritage Creek Estates. In addition to the foregoing, Christine was employed as a weekend manager docent at Cliveden Historic Mansion of the National Trust, located in Germantown, PA. In both the above museums, her employment positions encompassed full responsibilities toward opening and closing procedures, including safeguarding of valuable collections. Christine regularly pursues independent interpretive studies of colonial lifestyles and early American collections. Christine has also designed and facilitated Antiques and Collectibles classes at both Cheltenham and Abington Adult Evening Schools.

Beginning in 1998, Christine served as volunteer docent of the Historic Houses in Fairmount Park with the Philadelphia Museum of Art, with whom she presently holds emeritus status, and has been a coordinator of the 2005 docent class and an administrator of the Docent Competency Tests, written and oral, and was selected as a February 2013 PMA representative for the Greater Philadelphia Area Docents Consortium. As part of her various responsibilities, Christine has provided numerous tours of historic buildings, period furniture and antiques.

We feel that Laurel Hill Mansion is fortunate to have such a multi talented person as Christine Mifsud on the Garden Committee and Board of Women for Greater Philadelphia.



WILLIAM BROOKE RAWLE

Although William Brooke Rawle, born William Rawle Brooke, (1843-1913), a descendent of the Rawle family, never resided at Laurel Hill Mansion,* he has played a very significant role in preserving and documenting the history of the Rawles and of LHM. His material is on file at the Historical Society of Pennsylvania and includes genealogical research, correspondence, diaries and other manuscripts. Additionally, he has written numerous books including *Blue-Blooded Cavalryman*, 1866; *The Right Flank at Gettysburg*, 1878; and *Laurel Hill and Some Colonial Dames Who Once Lived There*, 1911.



William Brooke Rawle holds an impressive pedigree. He is the grandson of William Rawle, first President of the PHS, and son of Sarah Tilghman Rawle Brooke (1818-1897);

His father was Charles Wallace Brooke (1813-1849), member of the Philadelphia Bar; and Rawle was a descendent of Chief Justice Benjamin Chew.

Wm Brooke Rawle

WBR attended prep school at Dr. Faire's Academy and graduated from the University of Pennsylvania in the class of 1863. Rawle joined the Union Army as a Cavalry Officer and distinguished himself in battle while also documenting nearly everything that came under his observation in 150 well written letters to his family which

have provided a richly detailed look into the life of a regimental cavalry officer during the Civil War. Rawle's memoirs include events such as the Presidential election of 1864 and the assassination of Abraham Lincoln.

Following the war, Brooke studied law with William Henry Rawle and changed his name to William Brooke Rawle before his admittance to the Bar in 1867. He was active in the Philadelphia Bar Association as Treasurer from 1879 to 1890, and instrumental in building up an impressive law library. He was a member of the American Philosophical Society and joined the Historical Society of Pennsylvania where he played an active leadership role in the construction of a new building and establishment of scholarships. William Brooke Rawle was a natural born collector of material relating to the history of the country and was most careful and methodical in putting it in the best possible state for preservation. As a decorated Army Officer, he was a constant student of the history of the Civil War, especially the Battle of Gettysburg.

In 1900, the Colonial Dames of America became stewards of Randolph Mansion, making extensive repairs at their own expense to use the house for their Society Meetings. When the house was reopened in 1901, William Brooke Rawle was the guest speaker, and discussed the history of his ancestors and Laurel Hill Mansion, the structure they once occupied.

In his last years of life Rawle traveled constantly with impaired health. He died on November 30th, 1915 and is buried in Laurel Hill Cemetery in Philadelphia, Pennsylvania.

Note:*The Syng-Physick and Randolph families acquired the property in 1828, and sold to it the Philadelphia Park system in 1869.

Nancy Santucci Cohen, M.B.A., LHM Newsletter Editor

HISTORY QUIZ ANSWER: ROGER SHERMAN, CONNECTICUT POLITICIAN AND SUPERIOR COURT JUDGE, WAS THE ONLY PERSON TO SIGN ALL FOUR FOUNDING DOCUMENTS



Women for Greater Philadelphia is a non-profit 501(c)(3) corporation of volunteers. The goals of the corporation are to promote and enhance the historical, philosophical, educational & cultural value of Greater Philadelphia & to maintain and preserve Laurel Hill Mansion.